

CONTROL THE FUTURE. WE DO.

With the new Trimble Earthworks®
Grade Control Platform for Graders



Contact SITECH Mid-Canada Ltd. today to try out
Trimble Earthworks for Graders.



YOUR CONSTRUCTION TECHNOLOGY PROVIDER



YOUR
CONSTRUCTION
TECHNOLOGY
PROVIDER

SITECH YEARLY

SITECH MID-CANADA LTD.

2019 EDITION

Featuring:

The New Earthworks Grade Control Platform
Welcoming SITECH QM & Silver Top Supply
Customer Testimonials
Siteworks, Groundworks, Trimble Go!...& More



SITECHMIDCANADA.COM

CALL TODAY! 905.851.5658
ONTARIO | MANITOBA | ATLANTIC | QUÉBEC

SITECHMIDCANADA.COM

CALL TODAY! 905.851.5658
ONTARIO | MANITOBA | ATLANTIC | QUÉBEC

ABOUT US

Our team at SITECH Mid-Canada Ltd. understands how to apply Trimble technology to effectively solve some of the biggest challenges you're facing on the construction site. SITECH will help you leverage your technology systems for your entire fleet of heavy equipment and we are your local experts for Trimble Connected Site® solutions.

CONSTRUCTION TECHNOLOGY:

- Grade Control Systems
- Site Positioning Systems
- Machine Monitoring
- Proximity Awareness
- Machine Weighing
- Telematics and Analytics
- Planning and Engineering
- Construction Software
- Wireless and Internet-Based Infrastructure
- Construction Tools

SERVICES:

- Customer Service and Sales
- Installation Services
- Personalized Training
- Technical Support
- Professional Services
- Support Agreements
- Authorized Service Centre

WELCOMING SITECH QM IN QUÉBEC AND NOVA SCOTIA TO OUR TEAM!

SITECH Mid-Canada Ltd. welcomes SITECH QM (Québec/Maritimes) to the family. SITECH Mid-Canada's expanded footprint now allows for multiple locations and resources for sales, parts supply, service, support, and training.

Our technology customers will now benefit from having one cohesive company to deliver Trimble Civil Engineering and Construction (CEC) products to market. Combining Trimble's best in class products and access to SITECH's experienced team of experts, our customers are sure to find success when adopting construction technology no matter where the job is based.



3D CONCRETE SLIPFORM PAVING

NO STRING NO DELAYS.

It's time to kick stringline off your job site...for good.

Stringline delays your pour, it costs too much, and it's just too hard for your haul trucks to drive around. Every time it breaks, you have to stop the machine. Every time it sags, your surface suffers and so does your bonus. Once you start paving with the Trimble PCS900 Paving Control System, you'll wonder how you could ever use string in the first place. You'll start working faster every day. Your haul trucks can pull up and dump without driving around string. You'll stop less often, grind fewer problem spots and blow away your target IRI number.

MORE CONTROL. LESS WASTE.

You'll see efficiency improvements through:

- Improved site logistics and safety
- On time delivery of mix
- Better yield
- Increased smoothness



SITECH MID-CANADA LTD. IS HAPPY TO PARTNER WITH:



ONTARIO LOCATION



QUÉBEC LOCATION



MANITOBA LOCATION



NOVA SCOTIA LOCATION

TRIMBLE PCS900 CONCRETE PAVING TOOLS

Optimize the Paving Site for More Profit

Trimble offers productive, integrated and innovative solutions for the complete paving job site to keep you on track throughout the project lifecycle. From milling to paving to compaction, Trimble solutions for paving can help contractors ensure quality, reduce expensive material usage, and pave to the tight accuracies required by today's government agencies. Once you start paving concrete with PCS900, you'll wonder how you could ever use string line. Trucks can pull up and dump without driving around string. You'll stop less often, grind fewer problems and blow away your target IRI number.

Features and Benefits

PCS900 Paving Control System Trimble PCS900 Paving Control System for Slipform Pavers uses automatic steering and 6-way control of the pan to keep the paver exactly on the target alignment, design and slope. The result is a more consistent concrete surface with better rideability and a bigger bonus – without the time and cost of string.

You'll see efficiency improvements from day one through:

Improved site logistics and safety

- Better yield
- Increased smoothness
- Less rework and grinding

PCS900 Paving Control SystemForm even greater control of material placement, Trimble offers a dual GNSS-based paving control solution for placer/spreader machines to:

Significantly improve paving productivity

- Reduce material waste
- Reduce labor costs

The GNSS-based system allows contractors to move their Trimble GCS900 Grade Control System display, radio, sensors and GNSS receivers between even more machines in their fleet.



Level Best®
PRECISION GRADING

Unrivalled for every precision grading job



ACCURACY

Make a finish grade accurate to within 1/10th of an inch. No other grading equipment is more accurate.



SMOOTH PERFORMANCE

Operators strongly prefer the smooth Level Best operation because they don't tire and can get more work done in less time. The Level Best hydraulic valve system adjusts over fifty times per second on the fly.



DURABILITY AND SERVICE LIFE

Level Best grading systems are made in America to the highest standards of material and craftsmanship. You'll log thousands of high production hours.

1-2-3

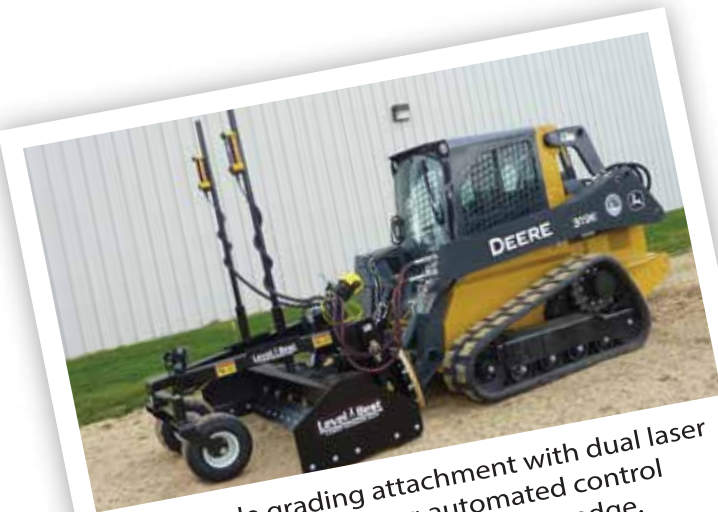
SIMPLE, EASY OPERATION

Learning how to use Level Best systems is fast and easy, especially for experienced operators.



EXPERT DEALER SUPPORT

Level Best equipment is available only through authorized dealers. They have the resources you need for training, parts and reliable support.



Box blade grading attachment with dual laser controls providing automated control of lift and tilt of the cutting edge.

New to the Family...



Welcoming Silver Top Supply

We are very pleased and proud to welcome Silver Top Supply out of London Ontario to the SITECH Mid-Canada Ltd. family. As of February 1st 2019, Silver Top Supply (STS) will operate as a division of SITECH Mid-Canada Ltd.

Since 1985, Silver Top Supply has operated and served the Aggregate, Mining & Waste Industries with Trimble Loadrite as well as other industry products. Along with their responsive parts supply and inventory management programs, Silver Top Supply provides onsite expertise to help customers improve throughput, reduce operating costs and ensure safety on their job sites. Carrying an expanding line of aftermarket devices and features for material handling equipment, Silver Top Supply will continue to offer contractors and site managers more ways to leverage our dealership expertise to improve operations.

Silver Top Supply will continue to support their current customer base as well as now expanding their footprint from Manitoba to the East Coast and into the Canadian Arctic.

SITECH Mid-Canada Ltd. along side Silver Top Supply have closed the gap in being able to provide integrated products, technology solutions, services and support all from one source. Mine sites, gravel pits, concrete and asphalt plants as well as the destination job site will all benefit from partnering with vertically integrated technology professionals. The distance between office and field as well as source aggregates and materials to the final destination has never been closer.

About SITECH Mid-Canada Ltd.

The experienced construction professionals at SITECH Mid-Canada Ltd. & SITECH QM will partner with OEM, Civil contractors & Engineers throughout Ontario, Manitoba, Newfoundland, Québec & the Maritimes. Our goal is to offer the right Construction Technology solutions for the job along with providing high-quality local customer service, personalized training, and technical support.



BLAXTAIR®

ARCURE

The Blaxtair
PERSON/MACHINERY ANTI-COLLISION CAMERAIncrease
safety and
productivityAUTOMATION
& INDUSTRYLOGISTICS
& HAULAGE

SITECHMIDCANADA.COM

SITECH

905.851.5658

IN PARTNERSHIP
WITH:

BLAXTAIR®

VTOL is not a choice,
it's your only option

WingtraOne

wingtra

There is no need to choose between the functionality of multicopters and the coverage of fixed wings anymore. The vertical take-off and landing (VTOL) drone WingtraOne is the one and only mapping drone you need!

large coverage | high resolution | accuracy down to 1 cm (0.4 in)

SITECHMIDCANADA.COM

SITECH

905.851.5658

IN PARTNERSHIP
WITH:

wingtra

Accurate, repeatable,
on-board weighing.

LoadMan Load Management System for Mining



SITECHMIDCANADA.COM

SITECH

905.851.5658

IN PARTNERSHIP
WITH:ADVANCED
DRONE PILOT CERTIFICATEAlteX
ACADEMY

A complete program including Ground School, in-person Flight Training and Flight Review to receive Transport Canada's Advanced Drone Pilot Certificate.

This program is designed for working professionals to understand the safety, efficiency, and effectiveness of drone operations.

Drone rental (DJI Phantom 4 Pro) is included for flight training and review.

Student Registration:

<https://altexacademy.com/drone-training-sitech/>

SITECHMIDCANADA.COM

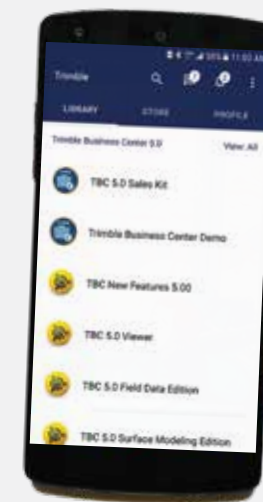
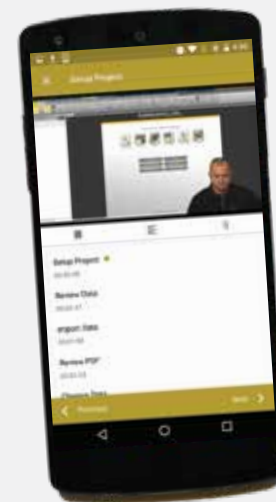
SITECH

905.851.5658

IN PARTNERSHIP
WITH:AlteX
ACADEMYDID YOU KNOW?
Trimble Library

Did you know the Trimble Library provides a selection of Knowledge Apps (kApps) which contain indexed and searchable videos for you to learn how to quickly get up to speed and use the Trimble Business Center software? You will also find some additional kApps covering other Trimble software and hardware topics.

Contact us today and we'll get you signed up for a Library account, it is free!



Trimble

YOU MAKE MONEY.
WE MAKE IT SEAMLESS.

Let us show you how investing in site technology can revolutionize your construction workflow.



YOUR CONSTRUCTION TECHNOLOGY PROVIDER

SITECH Mid-Canada Ltd.
ONTARIO: 905-851-5658
MANITOBA: 204-477-4677
QUÉBEC: 819-373-7543
NOVA SCOTIA: 902-468-4181

SITECH

PAVING THE WAY - TRIMBLE PCS900

SITECH Mid Canada is in a unique position being able to supply and support our customers with the Trimble PCS900 product line for 3D paving and 3D milling applications. The Trimble paving solutions are also available for 2D applications and compatible on almost any OEM machine. With 2D paving you are paving to a specific thickness and slope referenced off a pre-existing surface. Think of this as the ground up approach where the system is measuring the current surface conditions and adding the proper amount of

asphalt to get to the design grade and slope. 3D paving systems reference a Virtual 3D surface based on what the finished product is supposed to look like. Think of this as a design down approach that doesn't require the existing surface for guidance. In most paving applications, a 2D system is sufficient. However, when you get to more complex 3D surface designs, a 3D paving solution can make life a lot easier. Give SITECH Mid-Canada a call today to find out how we can support your 3D paving project.





DRIVEN BY DATA.

SITECH Mid-Canada's Professional Services Group will work with, and for customers to deliver turnkey projects or long-term services in construction planning, engineering, operations, maintenance, and project handover.



LOAD ONCE, LOAD RIGHT

Trimble LOADRITE Payload management systems support the Connected Quarry and the Connected Site by accurately measuring material production and movement. All LOADRITE systems are compatible with InsightHQ and LOADRITE printers.



SITECHMIDCANADA.COM



905.851.5658



WORKING Together...

SITECH working closely with our OEM partner Vermeer to provide a factory solution for a very unique project.

SITECH is able to work closely with all OEMs to deliver advanced construction technology solutions to our industry.



Contact SITECH Mid-Canada Ltd. today to learn about the value we can bring to your company or project.

TRIMBLE GROUNDWORKS



Drill Exactly to the Depth You Need

Reduced overdrilling means your machine drill bits and hammers won't wear out as fast.

Drill Inclined or Vertical Holes That are Evenly Spaced

A uniform blasting pattern delivers better surfaces and improves rock fragmentation to minimize hauling expense.

Reduce Time and Money Spent On Surveyors and Stakes

Stop pounding stakes and start making money.

SITECHMIDCANADA.COM



905.851.5658



TRIMBLE EARTHWORKS GO!

Introducing Trimble Earthworks GO! - the easiest-to-use and install machine control system available today that works with your Android or iOS device. ! It brings machine control down to earth by allowing you to install and move the system yourself to reduce machine downtime.



SITECHMIDCANADA.COM



905.851.5658



CCS900 FOR SOIL COMPACTORS

The Trimble CCS900 Compaction Control System helps you accurately control the compaction process, while reducing unnecessary passes that result in over compaction.

The early detection of unsuitable materials and hidden obstructions can be excavated and re-graded or compacted prior to more costly phases of the construction process. Compaction results are recorded and stored for analysis and generation of documentation deliverables at the end of the project.



SITECHMIDCANADA.COM



905.851.5658



GCS900 FOR WHEEL LOADERS

Use two GNSS receivers and solid state angle sensors and an Inertial Measurement Unit (IMU) to measure the precise 3D position of the bucket.

Track GPS, GLONASS and Galileo signals.

Quickly perform complex tasks and simplify finishing slopes with accurate 3D positioning.



SITECHMIDCANADA.COM



905.851.5658



SITECH PROFESSIONAL SERVICES GROUP



Mission Statement

The Collection and Transmitting of Data that Enables our Customers to Manage and Link ALL Elements in their Current and Future Business Opportunities in the Most Cost Effective and Reliable Way.

What is SITECH Professional Services Group?

SITECH Mid-Canada's Professional Services Group will work with, and for customers to deliver turnkey projects or long-term services in construction planning, engineering, operations, maintenance, and project handover.

How are we taking the next step with you?

Professional Services offered by SITECH Mid-Canada Ltd. will be Canada's first construction job site solution to offer our customers a variety of services beyond the technology hardware and software selling portfolios. These days, customers are looking to partner with companies that can work with them, or for them to solve issues and/or deliver business knowledge or reports.

SITECH Mid-Canada's Professional Services Group will market a "Do It With You" or "Do It For You" approach to ultimately help customers understand their business intelligence, or to report and act on their Key Performance Indicators. Professional Services will follow the Collect-Analyze-Act-Report process while giving customer valuable insight their business intelligence of strength and weaknesses.

TRIMBLE QUANTM TECHNOLOGY

Quantm is a revolutionary planning tool for road/rail alignment selection with combined international expertise.

- Scoping studies
- Feasibility studies
- Pre-Feasibility Studies
- Value engineering

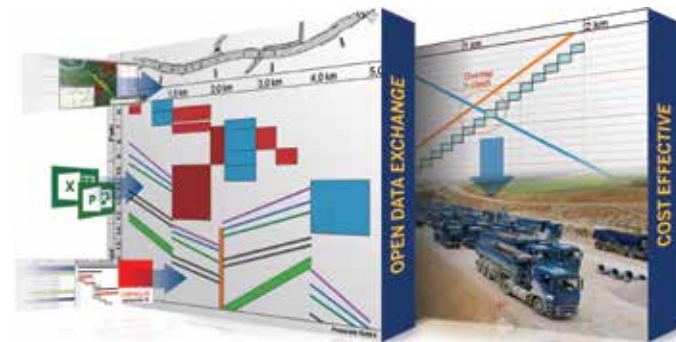
Quantm automatically generates multiple cost effective and viable alignments that meet the defined constraints.

- Consider all feasible alternatives to help make the best decisions
- Dramatically reduce planning time and project costs

Quantm technology has been used globally for planning thousand km of road and railway projects in Australia, New Zealand, America, Europe, Russia, Middle East, Africa, South East Asia and China.



TILOS LINEAR CONSTRUCTION PROJECT PLANNING



SMARTER. EASIER. ACCURATE. OPTIMIZED.

Creating linear project plans using traditional Gantt software can be cumbersome and inaccurate. Trimble® TILOS transforms the way linear project plans are created by integrating a scaled diagram of your project with a comprehensive project management system tailored for Railway, Road, Pipeline, Tunnel and Transmission line projects. TILOS combines time and location to give you a smarter, easier way to create accurate, optimized plans, and to quickly update these plans as schedule changes occur.

TRIMBLE EARTHWORKS FOR EXCAVATORS AND DOZERS



INTRODUCING UNDERTIME.

80% of construction jobs run into overtime.

That's why the new Trimble® Earthworks Grade Control Platform is designed to help operators do more in less time than ever before. Teams using Trimble Earthworks can exceed productivity expectations across jobs of all types.

CONTACT US TODAY FOR MORE DETAILS!



SITECHMIDCANADA.COM

SITECH

WASTE MANAGEMENT LANDFILL SOLUTIONS

Trimble GCS900 and CCS900 Systems are Trimble Connected Site® ready, so operators and machines work with fewer delays and less downtime.

By integrating wireless data syncing, remote support, GNSS corrections and telematics, Trimble Connected Machine functionality helps operators get to the target compaction with the fewest number of passes to save fuel, time and wear on the compactor.

Machines can collect as-built measurement data for office use, and receive GNSS corrections using virtual sources and the Internet.

A 3D design created in the office can be sent to the machine operator wirelessly for faster, more precise grading. Support can be delivered remotely, without ever leaving the office.



VisionLink® Landfill tracks the compaction and fill processes at your site when coupled with landfill compactors installed with Trimble® CCS900 Compaction Control Systems.

VisionLink Landfill tracks the compaction efforts of GPS-equipped compactors, and calculates the waste volumes placed and the compaction densities achieved in active cells. Optimize compaction and maximize landfill life with VisionLink Landfill.

CCS900 INTELLIGENT COMPACTION

3D COMPACTION WITH TRIMBLE CCS900
The asphalt compactor is the last machine to pass over your paving project, and mistakes during this phase can be very costly to fix. You can significantly reduce the need for re-work by installing the Trimble CCS900 Compaction Control System on your asphalt compactors.

The CCS900 system eliminates much of the guess work from asphalt compaction and helps achieve more consistent compaction to target design density. You will also be able to roll a more efficient pattern, increase productivity, and save fuel.



TRIMBLE 4D MONITORING SOLUTIONS

Trimble 4D Monitoring solutions for critical jobs like Buildings, Monuments, Dams etc... where high precision and accuracy needs are of the utmost priority. Every monitoring project is different and so the choice of suitable tools will also be different from project to project.

There is one request which is common in all monitoring applications - we want to collect information about the objects we are monitoring. In our case it is mainly survey data and we want to repeat this over a certain period of time, to be able to determine trends.

As every monitoring application is different also the choice of the sensors will be different. Key factors here are the size of the project, the type of the expected movement and the required accuracy of the results.



Trimble Business Center v5.0

Whats new in v5.0?

Trimble Business Center and Business Center - HCE Now Combined
Trimble has previously had two versions of the software, Trimble Business Center targeted at survey and geospatial users, and Business Center - HCE targeted at Civil Engineering and Construction users. Now both of these are combined into a single software platform in Trimble Business Center v5.00.

New Look & Feel
The Trimble Business Center team and our user experience (UX) designers created a new icon and color scheme to create a cleaner, modern experience. Under the hood all of your existing tools and core workflows are there, so current TBC users will feel right at home with the new version.

New Capabilities
Trimble Business Center v5.00 has a lot of other new capabilities such as automated feature extraction, powered by Trimble eCognition® software, dramatically reduces the time to extract features, such as trees, poles and signs, from point cloud data. New multi slice tools, combined with cutting plane workflows, allow you to quickly extract cross sections from point clouds at intervals along a linear geometry. This will help you save time with corridor redesign and maintenance reporting. For mobile mapping systems such as the Trimble MX9, survey and construction professionals can now easily integrate these multi-sensor data types together within the single software environment, streamlining their workflows and increasing productivity.

Trimble Macro Language (TML)
The new Trimble Macro Language (TML) allows survey and construction professionals to customize data computations and add new CAD and GIS workflows to fit specific local requirements. By extending out-of-the-box software capabilities, customers can further increase operational efficiency, reducing the time to create client deliverables.



SITECH

Trimble
Authorized Dealer

EARTHWORKS IN ACTION

WITH BAYVIEW CONSTRUCTION

Providing higher performance and increased efficiency, Trimble's Earthworks Grade Control Platform for excavators, dozers and graders is second to none when it comes to optimizing site operations. With both user experience and job accuracy at the core of its development, Earthworks allows machine operators to ditch the guesswork and dig with precision every time.

One SITECH client leveraging the Earthworks 3D grading system is Richmond Hill-based Bayview Excavating. A family-run business since 1963, Bayview focuses its fleet of seven machines on basement excavation for new home construction.

For Bayview Co-Owner and Operator Dave Dietrich, the promise of accuracy played a major role in his decision to use the Earthworks platform on one of the company's machines.

"If the system isn't accurate, then I don't need it," says Dave. "If I don't dig a flat-level basement, nothing else matters."

With Earthworks, Dave and his team have been able to take accuracy to the next level, working not only with more precision, but quicker and in a more cost-effective way. "I can dig faster with this system than without," says Dave, "and every extra basement I dig is more money in my pocket."

Besides accurate grading and a more productive site environment, Dave and his team at Bayview enjoy the functionality of the Earthworks system and hardware. Boasting a 10-inch touch screen tablet and user-friendly Android interface, the program easily becomes an extension of the machine itself with its intuitive controls.



DAVE DIETRICH CO-OWNER AND OPERATOR

THE SYSTEM ITSELF IS EXTREMELY FAST, ACCURATE, AND EASY TO USE.

It's not only Earthworks that has impressed Bayview Excavating. SITECH's ongoing support has proven to be invaluable for Dave and the company. "I found SITECH to be the best company I've dealt with, honestly," he says. "It's good to have a company that stands behind a product."

Earthworks exudes quality in all aspects – from the operator-facing interface to the perfectly finished product it helps construct. And with a dedicated support team like SITECH behind it, the system's level of value only increases.

"SERVICE & SUPPORT like no other"

With personalized support at the core of SITECH's services, the ability to build trusted relationships between partners is key in the success of any project. This has been the experience of Drain Brothers Excavating, a Kawartha-based construction company and client since 2016.

Drain Brothers' impressive fleet includes Trimble GPS on seven dozers and one excavator, as well as 14 data collectors and rovers on the field at any given time. This requires dedicated support from SITECH to maintain efficiency.

"SITECH has been fantastic to work with," says Brandon Robinson, Estimator and GPS Asset Manager at Drain Brothers. "Whenever we've needed additional assets they're there to help us and get us up and going."

According to Brandon, working with SITECH has opened doors for Drain Brothers, allowing the company to bid competitively on larger projects.

In addition to expanded capabilities, the company now works with limited downtime, increased safety, and higher profits due to GPS accuracy and dependable SITECH support.



Brandon Robinson

Estimator/GPS Asset Manager
Drain Bros. Excavating Limited

Trimble
DIMENSIONS

NOVEMBER 2 - 4, 2020
GAYLORD OPRYLAND HOTEL
NASHVILLE, TN



Will you be attending the next Trimble Dimensions?
Keep your eyes peeled for more information
and registration as 2020 approaches.



CENTRE FOR LEARNING!
IN ALL OF OUR LOCATIONS!

SITECH MID-CANADA LTD.
YOUR AUTHORIZED
Service Centre

- ✓ Trimble Certified Technicians trained specifically to service your Trimble equipment.
- ✓ Trimble Certified repair centre for all Laser and Heavy & Highway products.
- ✓ Calibrate and service most makes and models of equipment.
- ✓ Professional grade tooling and latest technology for servicing all types of equipment.
- ✓ General maintenance to complete overhauls.
- ✓ Easy shipping through Battlefield Equipment Rentals means you'll never have to go far to get your equipment serviced.

ASK US ABOUT OUR TRAINING COURSES!

- TRIMBLE BUSINESS CENTRE V5.0
- SCS900/SITEWORKS IN-FIELD TRAINING
- ADVANCED DRONE PILOT TRAINING

SITECH

TRIMBLE'S SURVEY, LASER & LAYOUT TOOLBOX!

CALL TODAY FOR DETAILS & OUR FULL LINE UP!



GL622 LASER LEVEL

SITE MOBILE

T-10 TABLET

ANDROID SITE TABLET

SPS585 ROVER

SPS986 ROVER

TSC7 DATA COLLECTOR

SPS785 ROVER

SPS930 ROBOTIC TOTAL STATION

SPS855 BASE STATION

SITECH

SITECHMIDCANADA.COM

905.851.5658

Trimble
Authorized Dealer